

Spring Welcome 2023: *Awards & Honors*



**PROGRAM ON
CLIMATE CHANGE
UNIVERSITY OF WASHINGTON**

Graubard-Calvin Awards

Climate Science Research Acceleration Fund

Forest Sciences, Landscape Architecture, Marine and Environmental Affairs, Atmospheric Sciences and Biology

Graubard Fellowship in the Program on Climate Change

Atmospheric Sciences, Oceanography, Environmental and Forest Sciences, Environmental and Occupational Health Sciences

Climate Solutions Projects

Graduate Students from Oceanography, Landscape Architecture, Atmospheric Sciences, Anthropology, School of Marine and Environmental Affairs



PROGRAM ON
CLIMATE CHANGE
UNIVERSITY OF WASHINGTON

2022-2023 PCC Fellows



PROGRAM ON
CLIMATE CHANGE
UNIVERSITY OF WASHINGTON



Margot Shaya (ESS)



Patrick Monreal (OCN)



Sarah Teman (SAFS)



Alyssa Poletti

4th Year PhD Student

Department of Atmospheric Science

Advisor: Dargan Frierson

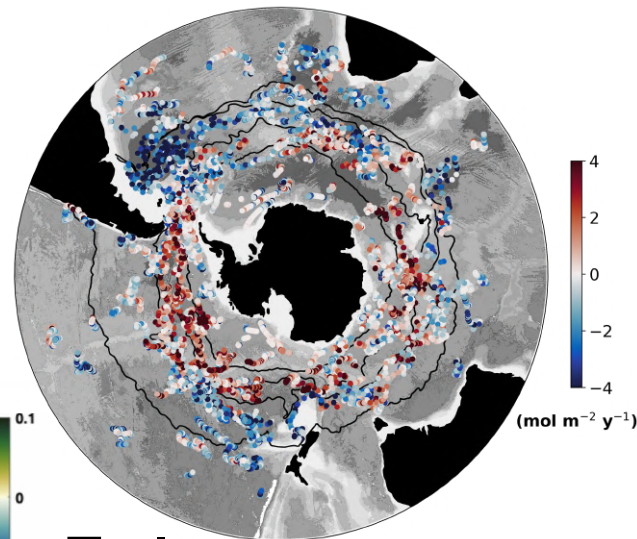
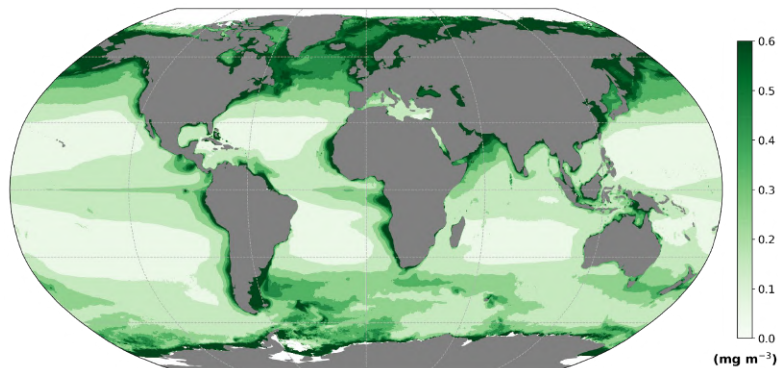
Graubard Fellowship:

*Exploring Climate Impacts of Low
Energy Demand Scenarios*



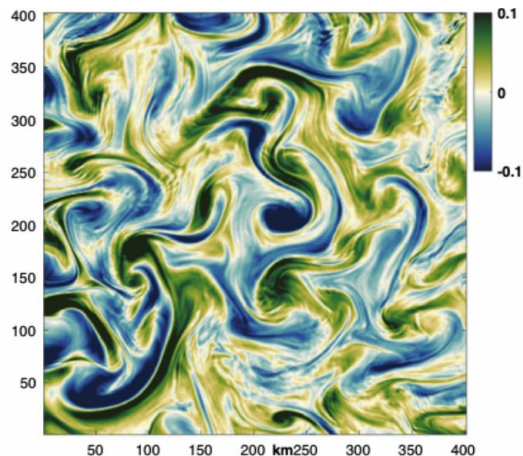
Channing Prend

School of Oceanography (cprend@uw.edu)



Research Interests

- Southern Ocean dynamics
- Sea ice variability
- Antarctic Ice Sheet melting
- Biophysical interactions
- Global carbon cycle



Tools

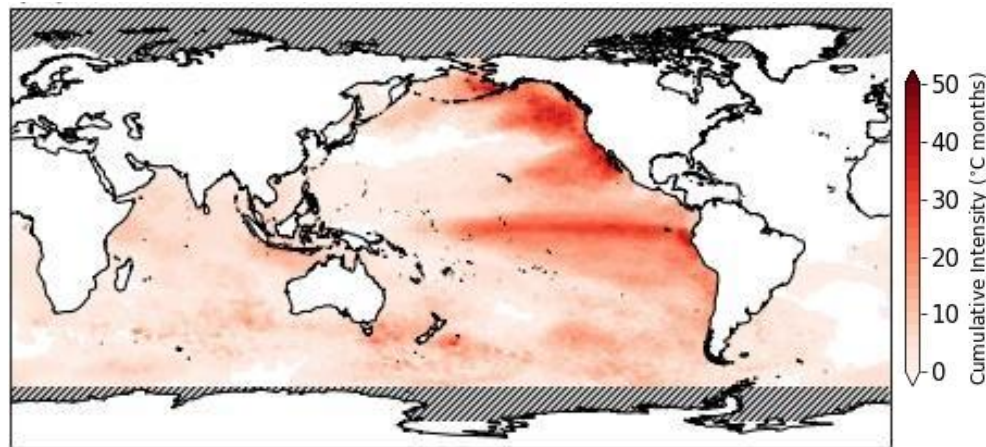
- Autonomous float data
- Satellite measurements
- Hierarchy of models

Jacob Cohen

4th year Ph.D. student

School of Oceanography

Advisor: LuAnne Thompson



Scannell et al. (2023) *in prep.*

Graubard Fellowship:
Predicting the Spatiotemporal
Evolution of Marine Heatwaves

Claire Schollaert, MPH

PhD Candidate (4th Year)

Department of Environmental and Occupational
Health Sciences
School of Public Health

Advisors: Tania Busch Isaksen, June Spector

Contact: cscholla@uw.edu



Graubard Fellowship Project:

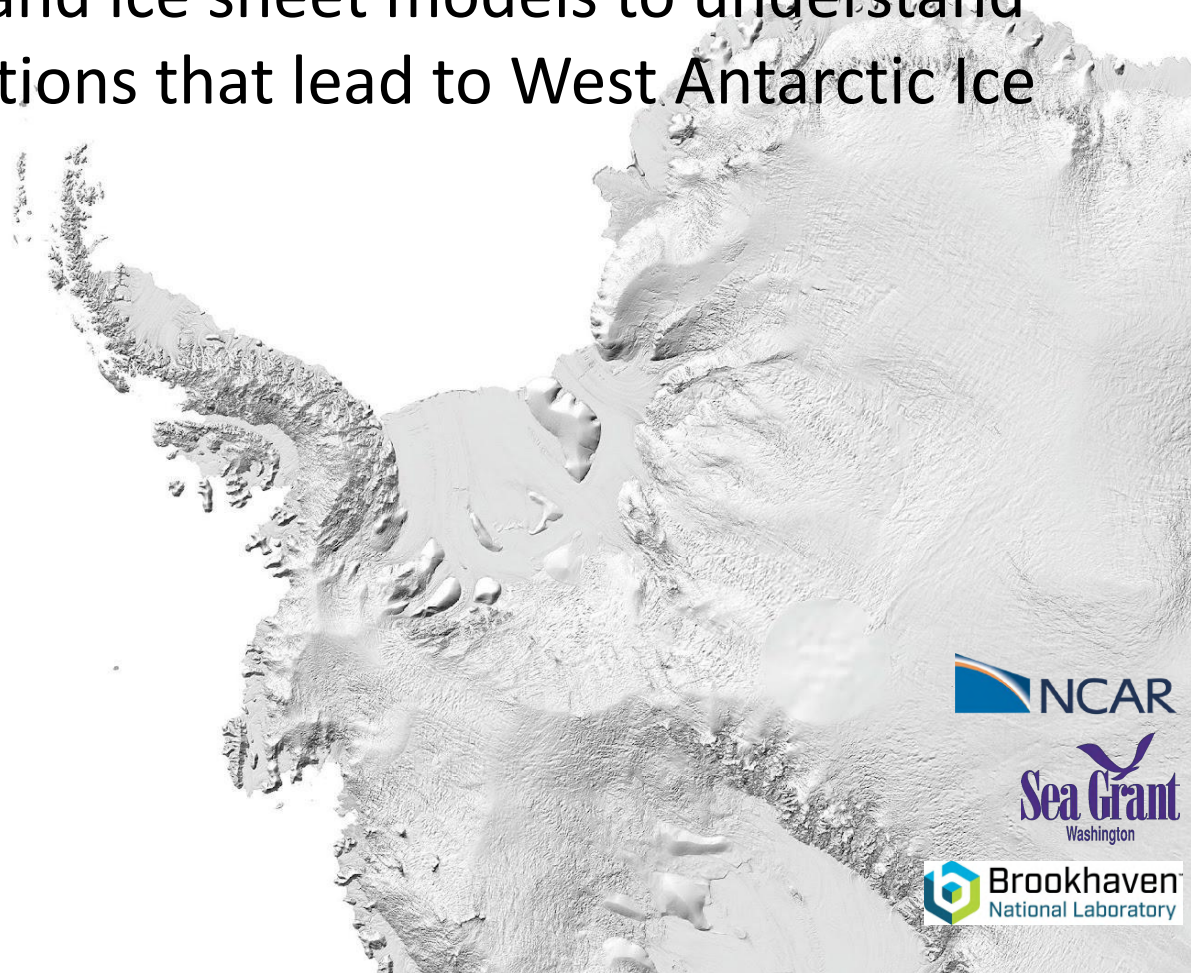
**Predicting smoke exposure
tradeoffs among forest restoration
scenarios in the Sierra Nevada, CA**



Using global climate and ice sheet models to understand the climate/ice conditions that lead to West Antarctic Ice Sheet collapse



Mira Berdahl
postdoc, ESS





Mary Margaret Stoll
4th Year PhD Student
School of
Oceanography



@MM_Stoll
mmstoll@uw.edu

PCC Climate Solutions Funding

Collaboration with climate science rapper, Baba Brinkman, to create rap video on the topic of climate change and carbon sequestration



Rap video on ocean-based carbon dioxide removal with Nathan Dufour



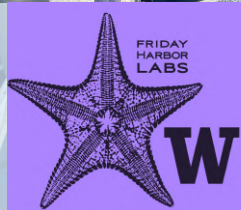
Baba Brinkman at Walker Ames lecture

**Effects of ocean
warming across the
life cycle of bull kelp**

**Effects of climate
change on alpine snow
algal communities**

Brooke Weigel
NSF Postdoctoral Fellow

UW Oceanography (Young Lab) &
Western Washington University (Kodner
Lab)



PCC fellow: Sarah Teman, first year MS student in SAFS

Advisor: Dr. Kristin Laidre

Research: Understand the cumulative stressors that affect the health of polar bears in the southern Beaufort Sea



Male and female breeding pair



Bear tracks



Benjamin Sullender

PhD student (2nd year)

School of Environmental and
Forest

Sciences

Graubard Fellowship Project:

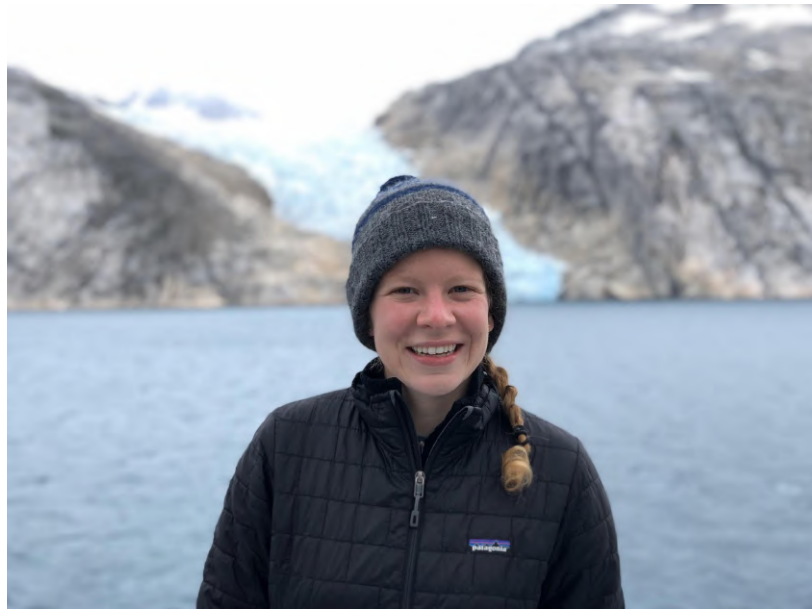
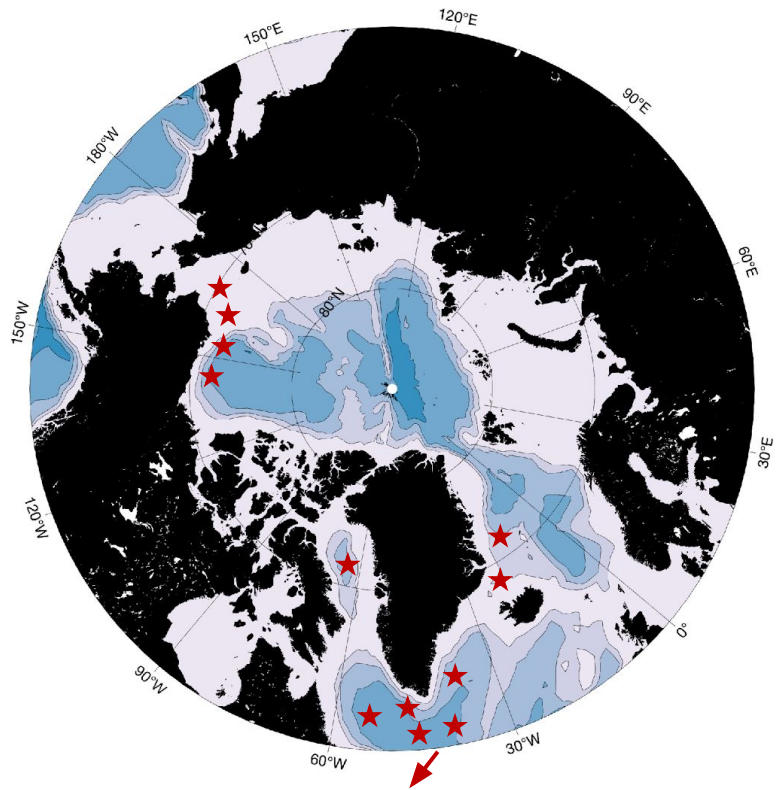
Integrating climate projections into
snow-mediated habitat selection for
carnivores and ungulates in the
Northeast Cascades

Contact: sullendb@uw.edu



Astrid Pacini

Applied Physics Lab, Polar Science Center
NSF Office of Polar Programs Postdoc Fellow
Observational Physical Oceanographer



Research Interests:

- Ice-ocean and air-sea interactions
- Boundary current dynamics
- Arctic-subarctic property fluxes

PCC Climate Accelerator

Polar Science at a Human Scale:

Knowledge co-production and application for community climate resilience in Kivalina, Alaska.

UW Investigators:

P. Joshua Griffin (PI; Project co-director) - Marine and Environmental Affairs & Department of American Indian Studies

Mia Bennett - Department of Geography

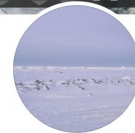
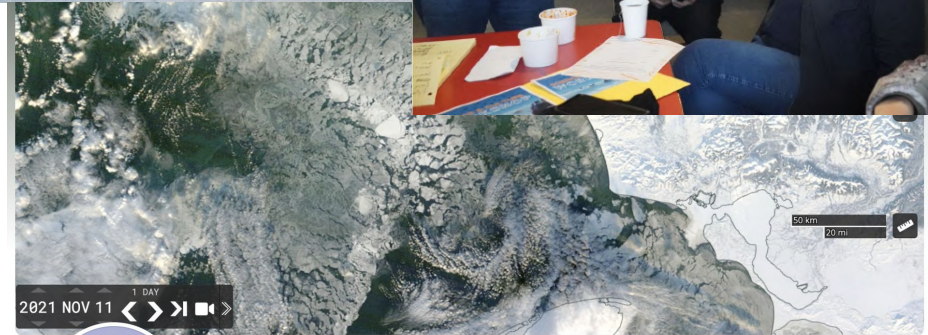
Cecilia Bitz - Atmospheric Sciences

Ed Blanchard-Wrigglesworth - Atmospheric Sciences

Community Investigators:

Colleen Swan (Project co-director) – City of Kivalina; Kivalina Volunteer Search and Rescue

Reppi Swan (Project co-director) –Kivalina Volunteer Search and Rescue



Kivalina Sea Ice Project

@kvlseaice · Non-Governmental Organization (NGO)

Following

Home

Groups

Jobs

More

Liked

Message

Search

More



Experimentally Induced Timing Mismatches in Multi-species Pollination Systems

PI: **Berry Brosi**
UW Biology Dept.



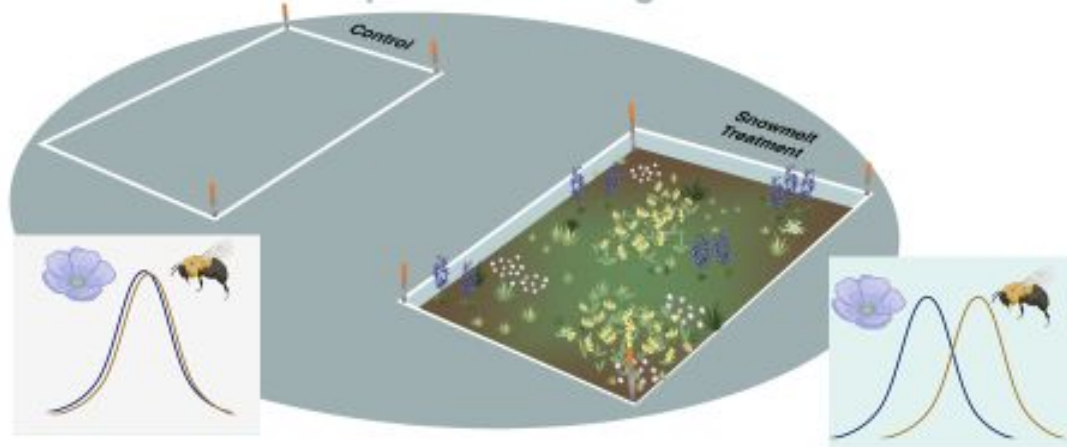
Timing mismatches between interacting species are a key predicted impact of climate change on ecological systems. We will conduct snowmelt-acceleration experiments in the Cascades to study the community-level impacts of timing mismatches between plants and pollinators by shifting flowering time of plants while keeping the pollinator community constant.



Graduate Student: **Madeleine Strait**
UW Biology Dept.



Experimental Design:



Graduate Certificate in Climate Science Completed 2022-2023

- Capone Benko, Raven (SMEA)
- Chen, Rachel (Urban Planning)
- Duffin, Dennis (MPA Environmental Policy)
- Hayman, Kristin (SMEA)
- Husiak, Kathryn (SMEA)
- Love, Katherine (SMEA)
- Ragen, Zho (OCEAN)
- Richter-Sanchez, Andrea (SMEA)